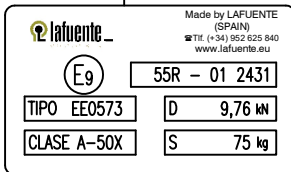
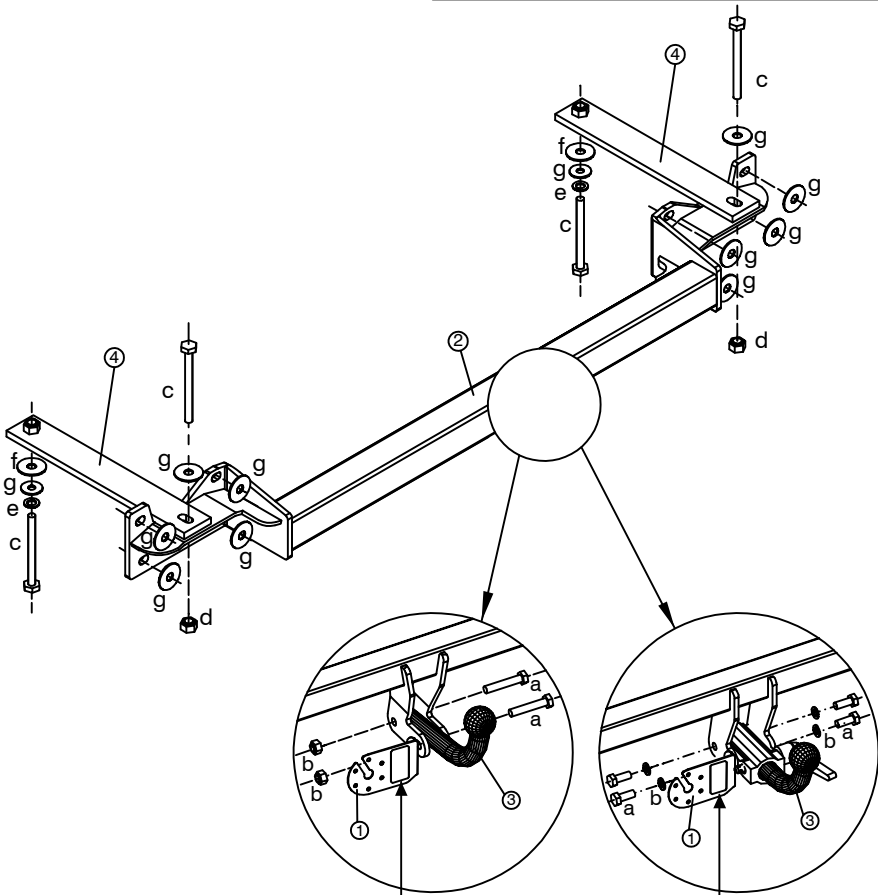
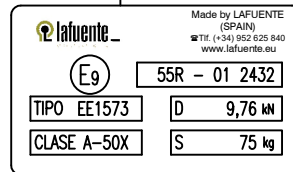


FORD CONNECT



E9*55R01/08*2431*00



E9*55R01/08*2432*00

Comprobar en el Certificado de Conformidad (COC) del vehículo las capacidades máximas de arrastre y carga vertical.
See the Certificate Of Conformity (COC) of your vehicle or contact your dealer to verify the max. trailer weight of your car!

M.M.R. 	S 	D
1.500 kg.	75 kg.	9,76 kN



ECE R55
homologación

Enganche homologado según Reglamento nº 55 CEPE
Hitch officially approved in accordance with Regulation nº 55 CEPE
Geprüfte Kupplung gemäß Reglement nº 55 CEPE
Crochet homologué selon la Règlementation nº 55 CEPE

ELEMENTOS DE UNIÓN / CONNECTION COMPONENTS DAZUGEHÖRENENDEN TEILEN / ÉLÉMENTS DE RACCORD

BOLA / BALL / KUGEL / BOULE		VEHÍCULO / VEHICLE FAHRZEUG / VÉHICULE	
	2 x M12x65 DIN 931 8.8	c 4 x M10x40 DIN 931 8.8	
	2 x M12 DIN 985 8	d 2 x M10 DIN 985 8	
		e 2 x M10 DIN 127 -	
		f 2 x M12 DIN 9021 -	
		g 12 x M10 DIN 9021 -	
	4 x M12x25 DIN 933 8.8		
	4 x M12 DIN 125 -		

Par de apriete para los tornillos/Tightening torque for bolts/Schrauben Drehmoment/Couple de serrage pour vis

Und.Nm	M6	M8	M10		M12			M14		M16
calidad	1	1,25	1,5	1,25	1,75	1,5	1,25	1,75	1,5	2
8.8	11,3	27,3	54,0	57,0	93,0	97,0	101,0	148,0	159,0	230,0
10.9	16,5	40,1	79,0	83,0	137,0	143,0	149,0	218,0	234,0	320,0
12.9	19,3	46,9	93,0	98,0	160,0	167,0	174,0	255,0	274,0	395,0

Este documento debe ser presentado en la I.T.V. junto con el certificado de montaje.
HERMANOS SÁNCHEZ-LAFUENTE, S.A. no asume ningún tipo de responsabilidad por daños causados por usos inadecuados.



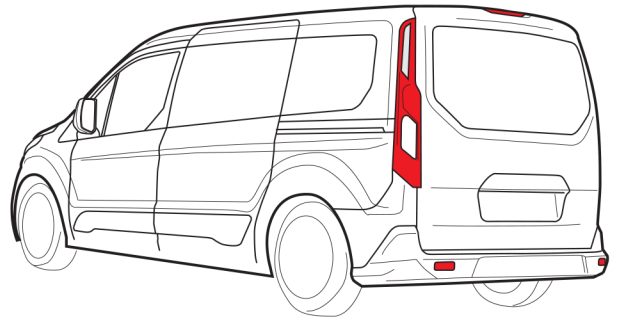
EE0573

FORD CONNECT

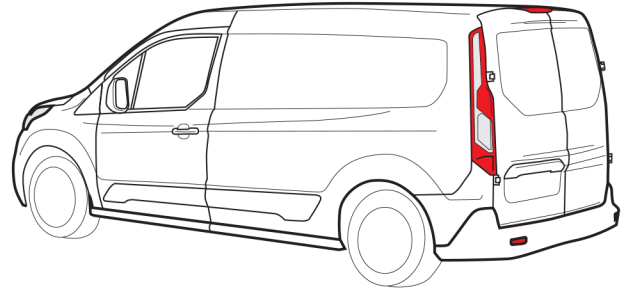


EE1573

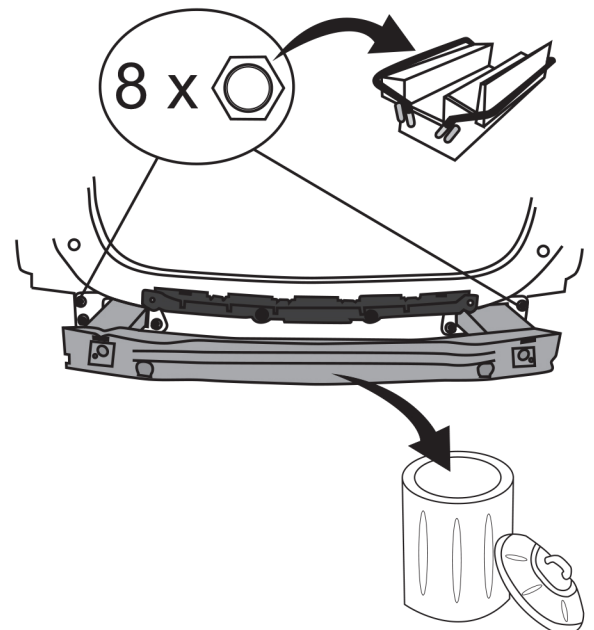
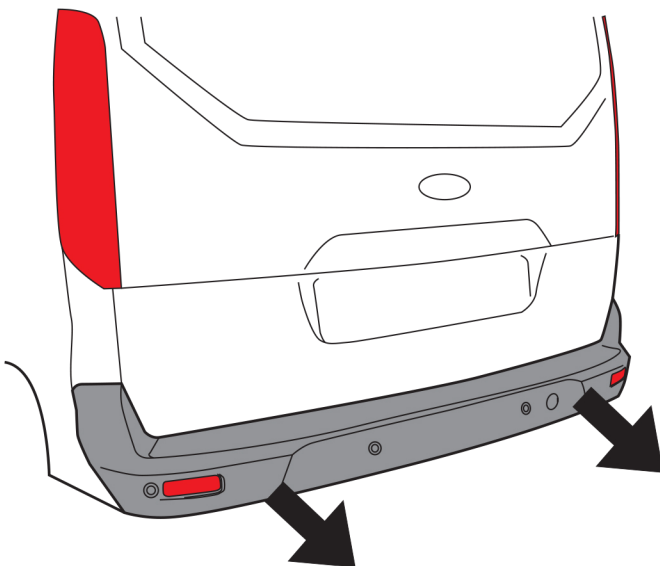
FORD TOURNEO
CONNECT

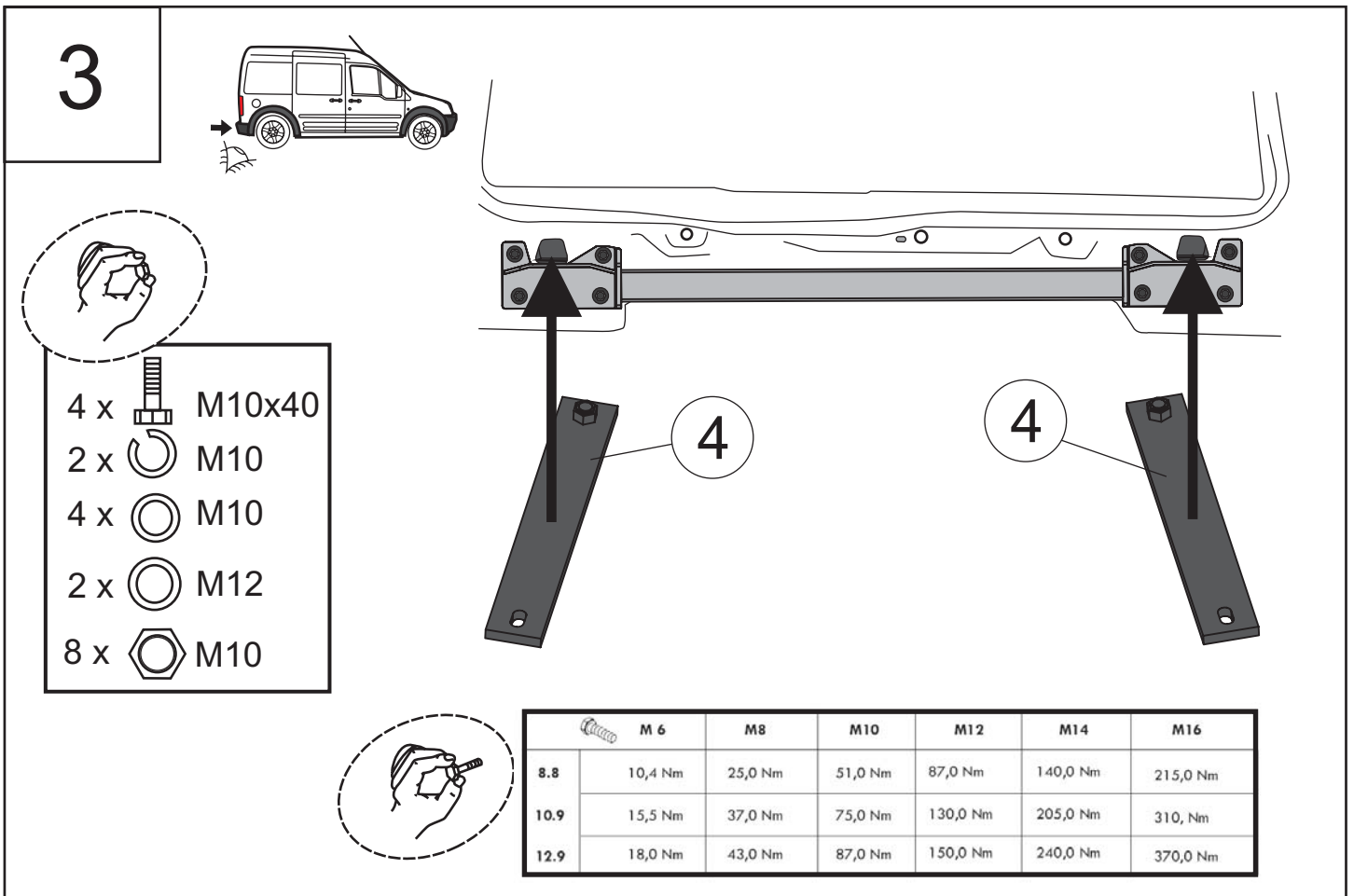
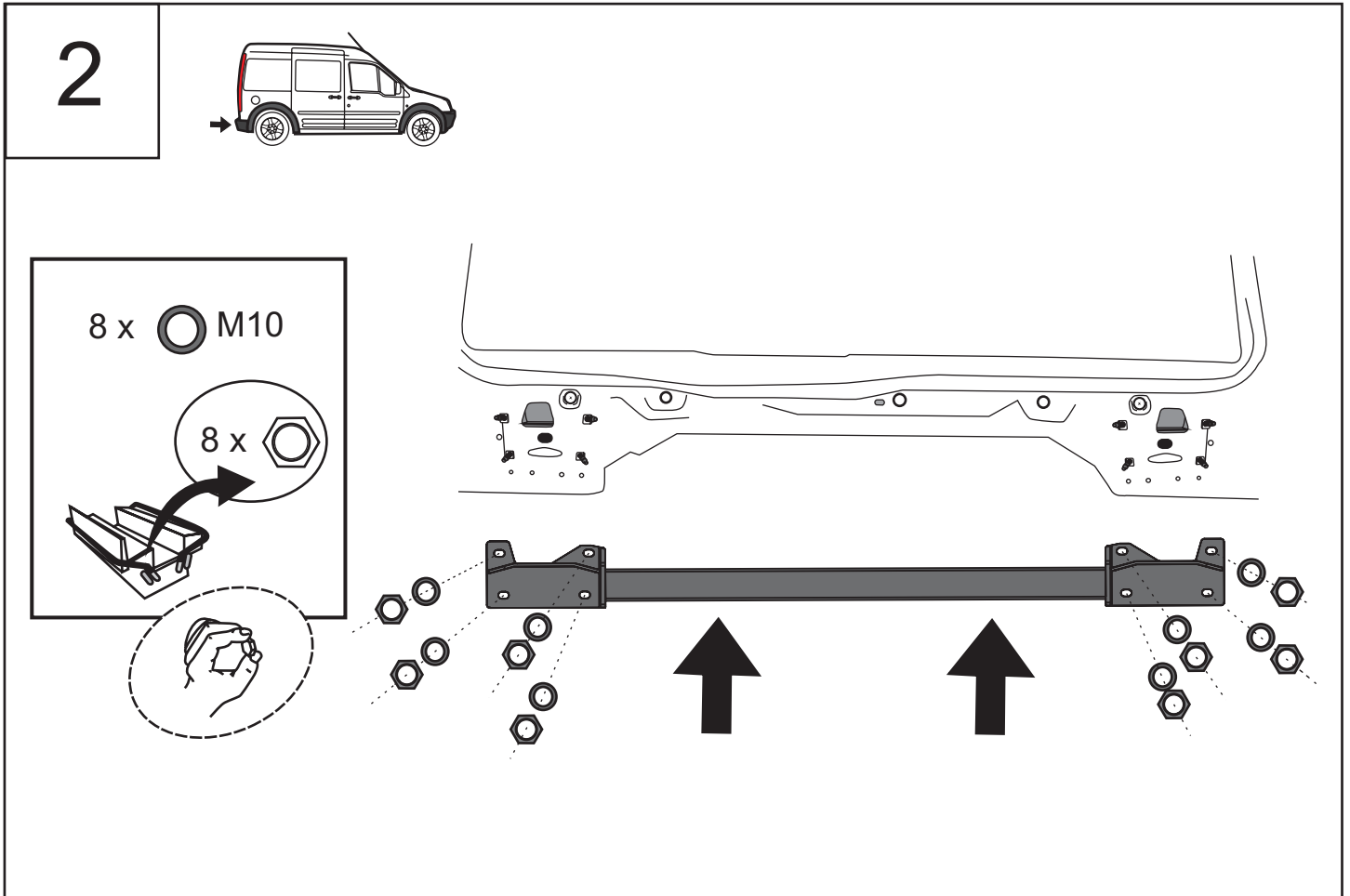


FORD TRANSIT
CONNECT

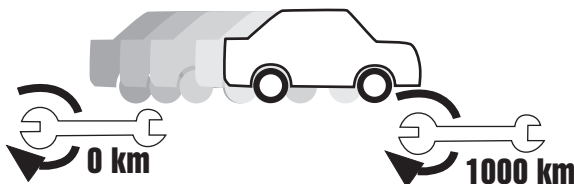
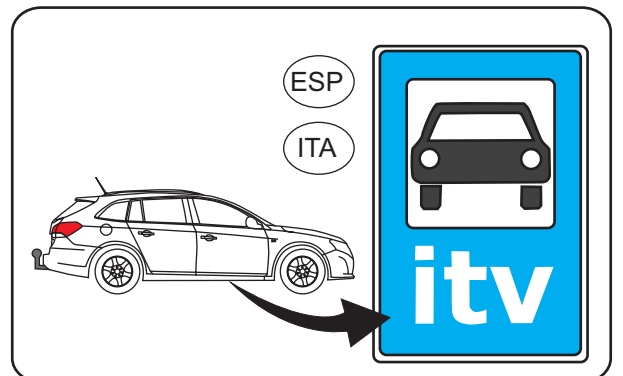
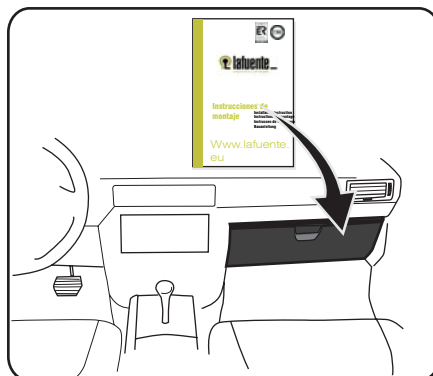
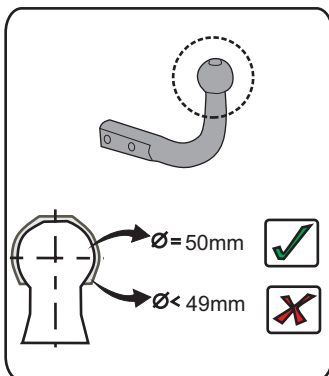
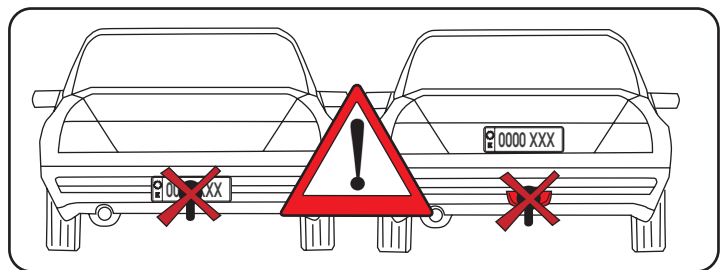
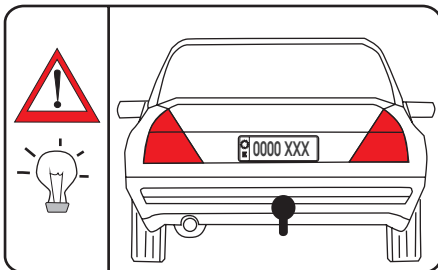
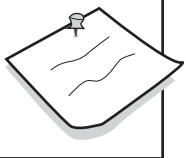
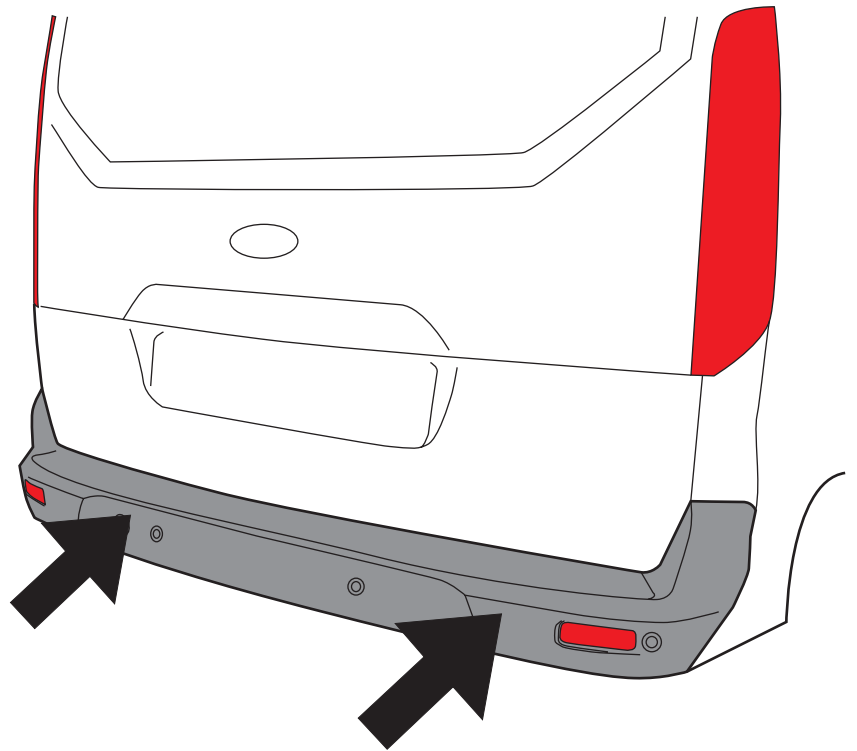
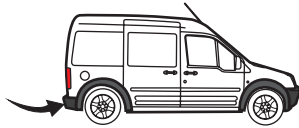


1





4



	M6	M8	M10	M12	M14	M16
8.8	10,4Nm	25,0Nm	51,0Nm	87,0Nm	140,0Nm	215,0Nm
10.9	15,5Nm	37,0Nm	75,0Nm	130,0Nm	205,0Nm	310,0Nm
12.9	18,0Nm	43,0Nm	87,0Nm	150,0Nm	240,0Nm	370,0Nm