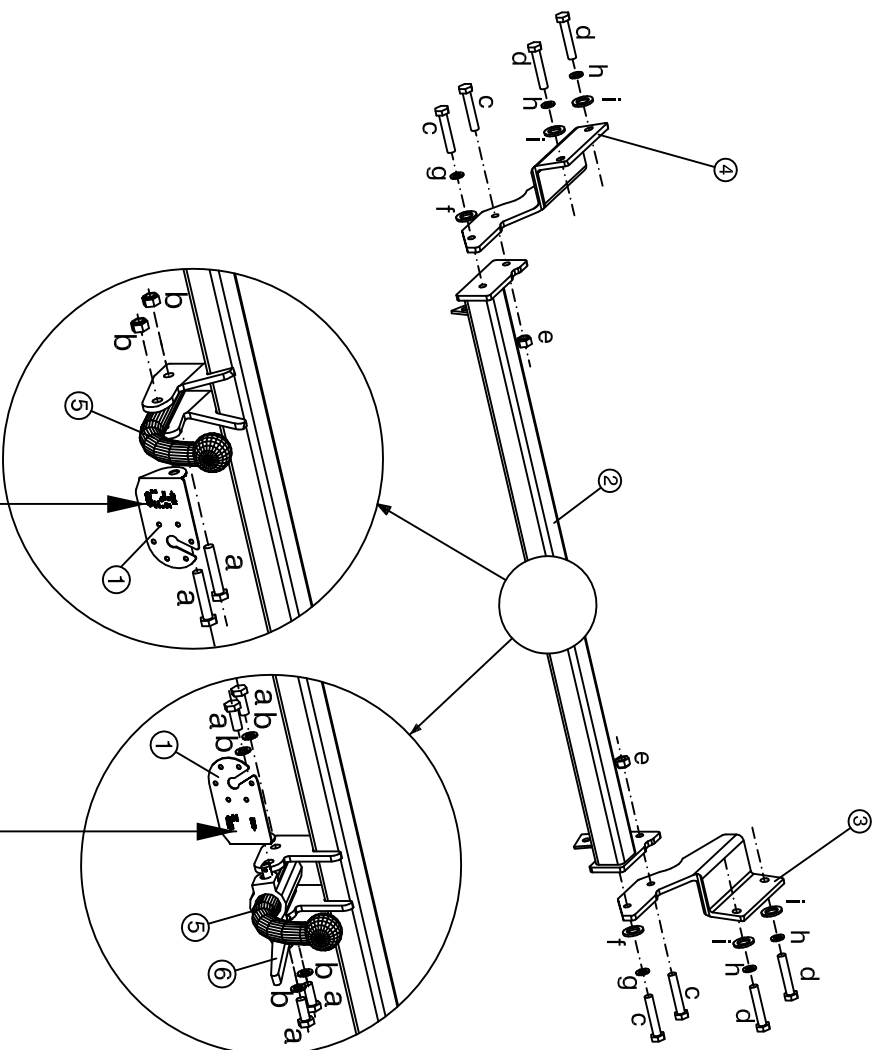


HYUNDAI i20

M.M.R. 	S 	D
1.110 kg.	75 kg.	6,26 kN



ECE R55
homologación



Made by LAFUENTE (SPAIN)
Tlf. (+34) 922 625 840
www.lafuente.eu

E9

5SR - 01 2108

TIPO EE0468

D 6,26 kN

CLASE A-50X

S 75 kg

Made by LAFUENTE (SPAIN)
Tlf. (+34) 922 625 840
www.lafuente.eu

E9

5SR - 01 2109

TIPO EE1468

D 6,26 kN

CLASE A-50X

S 75 kg

ELEMENTOS DE UNIÓN / CONNECTION COMPONENTS DAZÜGEHÖRENDEN TEILEN / ÉLÉMENTS DE RACCORD		VEHÍCULO / VEHICLE FAHRZEUG / VÉHICULE			
BOLA / BALL / KUGEL / BOULE					
a	2 x M12x65 DIN 931	8,8	c	4 x M10x35 DIN 933	8,8
b	2 x M12 DIN 985	8	d	4 x M12x40DIN 961	8,8
			e	0 x M12 DIN 985	8
			f	2 x M10 DIN 125	-
a	4 x M12x25 DIN 933	8,8	g	2 x M10 DIN 6798	-
b	4 x M12 DIN 127	-	h	4 x M12 DIN6798	-
			i	4 x M12 DIN 9021	-

Par de apriete para los tornillos/Tightening torque for bolts/Schrauben Drehmoment/Couple de serrage pour vis

Und.Nm	M6	M8	M10	M12	M14	M16
caliente	1	1,25	1,5	1,25	1,75	1,5
frío	11,3	27,3	54,0	57,0	93,0	101,0
	10,9	16,5	40,1	79,0	137,0	149,0
	12,9	19,3	46,9	93,0	160,0	174,0
					255,0	274,0
						395,0

Este documento debe ser presentado en la I.T.V. junto con el certificado de montaje.

H.NOS.SANCHEZ-LAFUENTE,S.A. no asume ningún tipo de responsabilidad por daños causados por usos inadecuados.



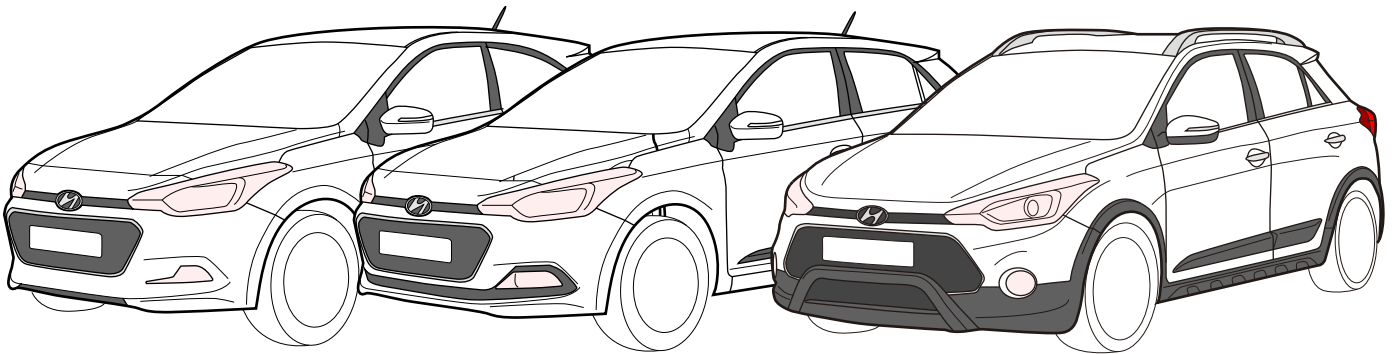
EE0468



EE1468

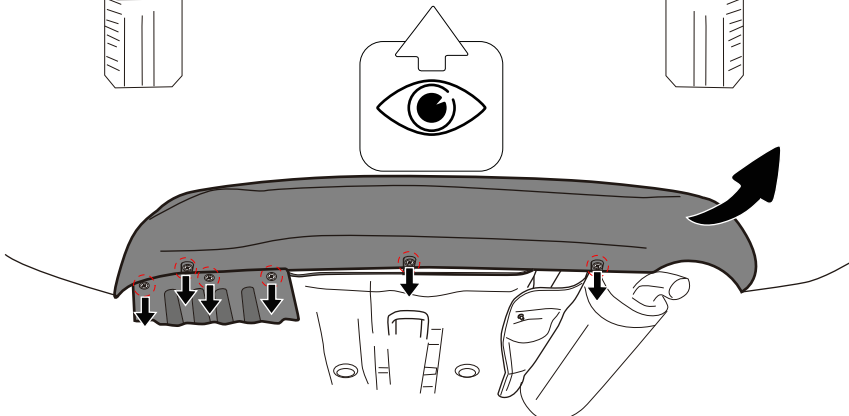
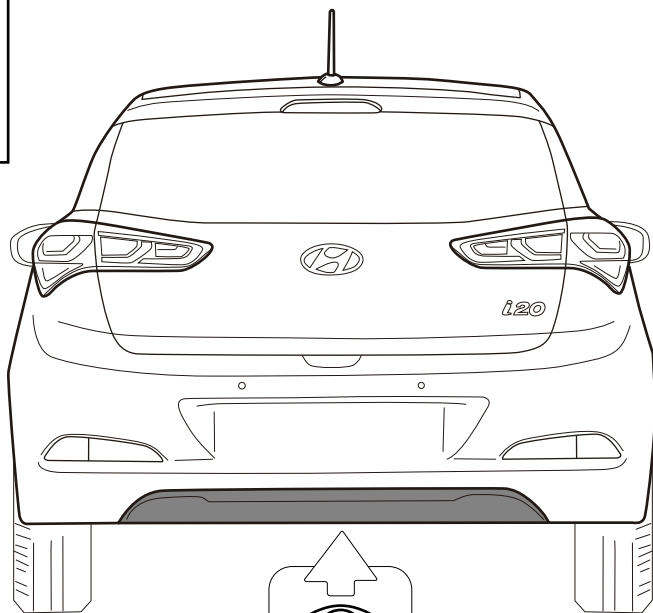
HYUNDAI i20

3puertas/5puertas/ACTIVE

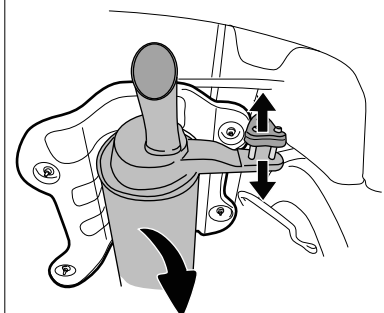


Instrucciones de montaje - Installation instructions - Notice de montage - Montage- og driftsvejledning

1

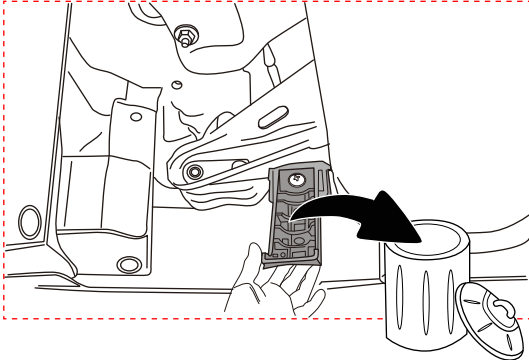
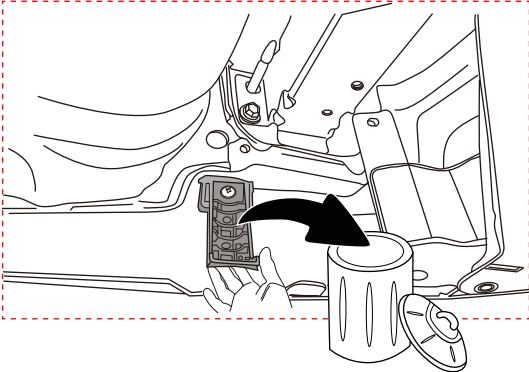
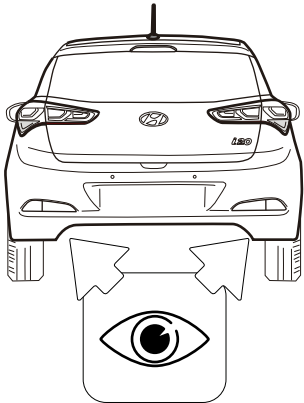


**HYUNDAI
i20 ACTIVE**

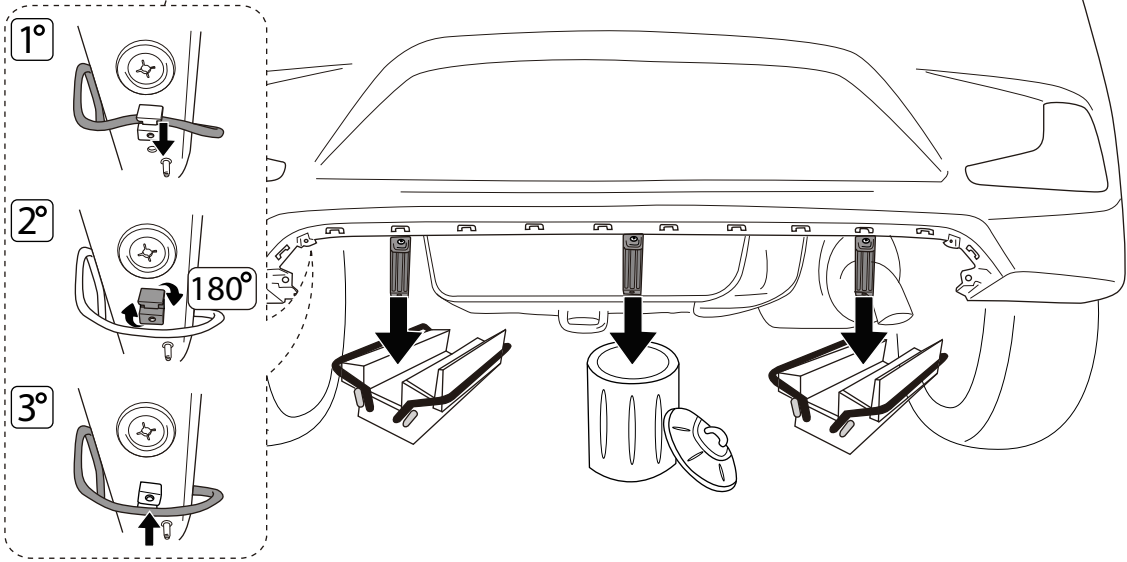


2

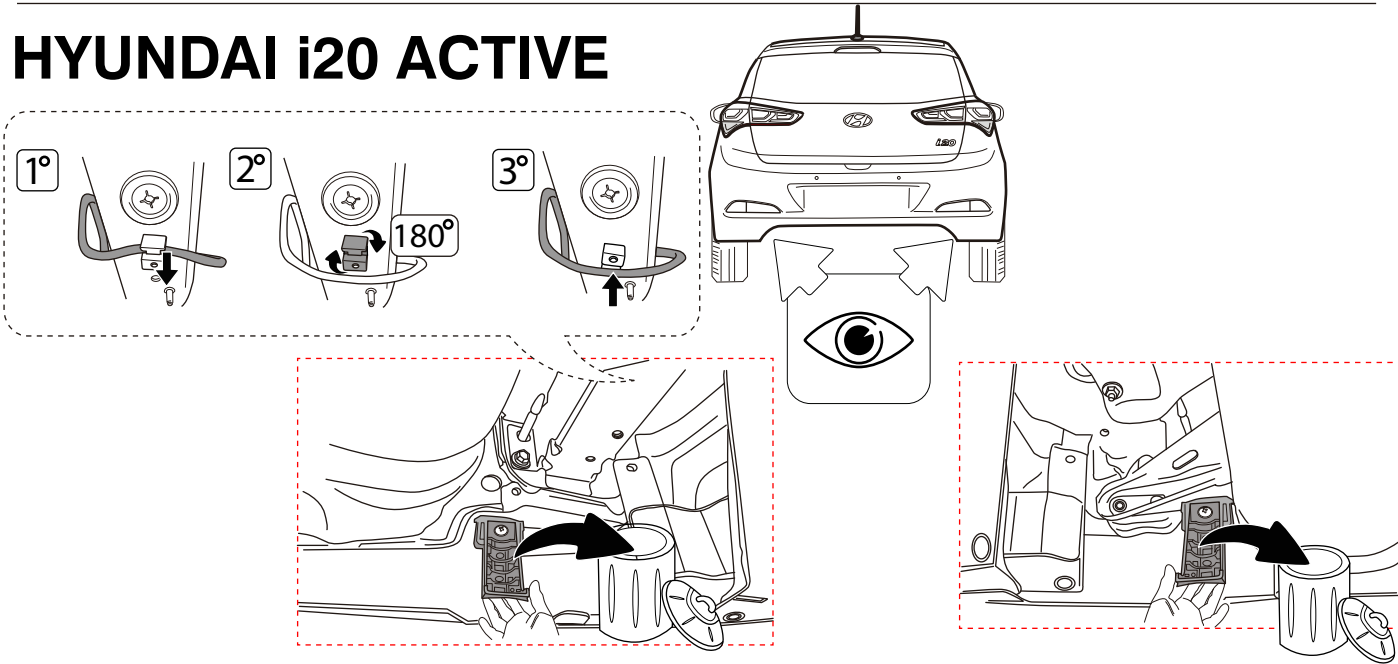
HYUNDAI i20 (5PUERTAS)



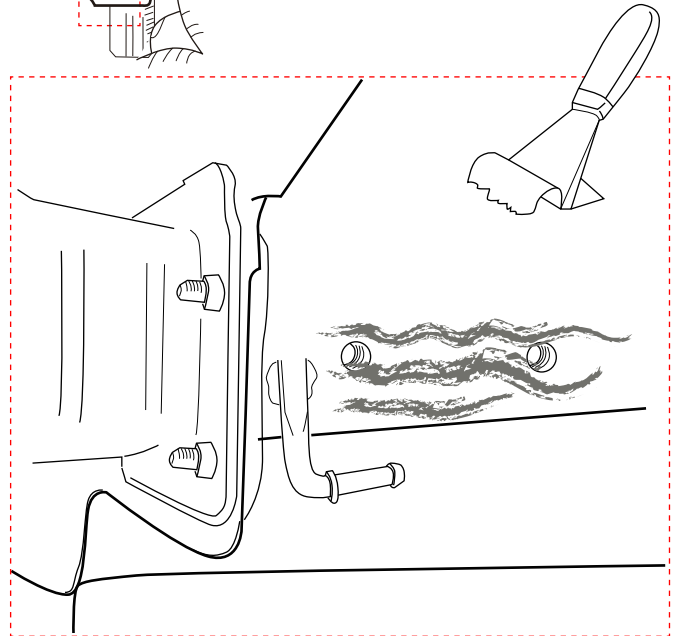
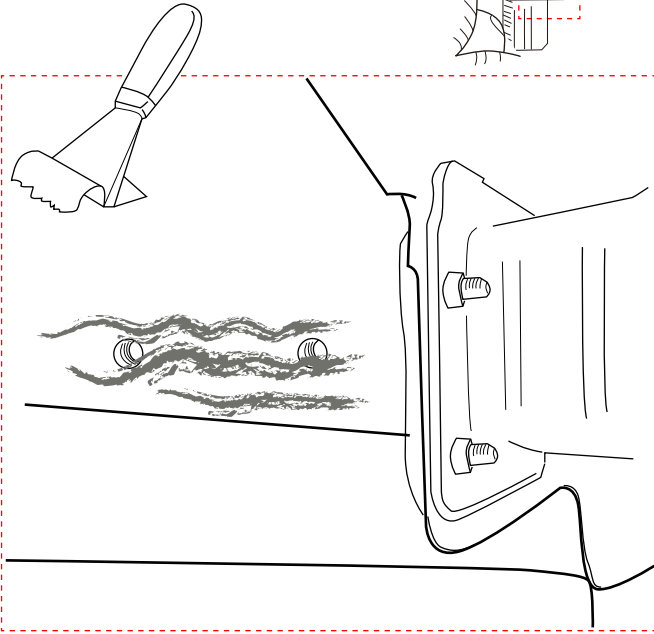
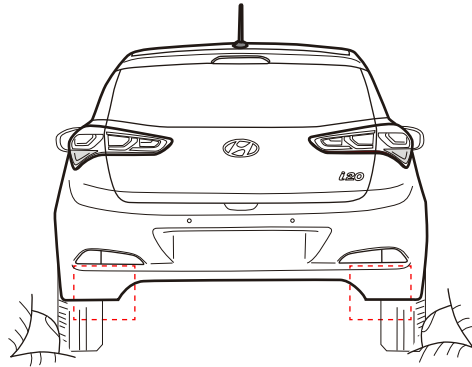
HYUNDAI i20 COUPE



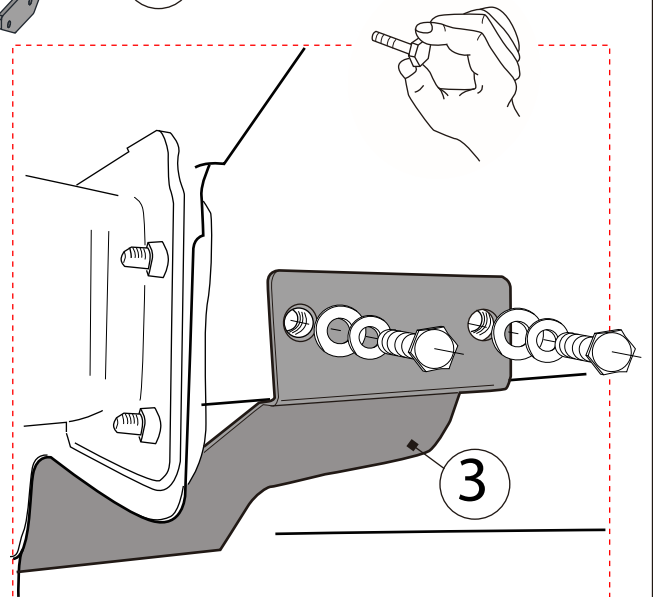
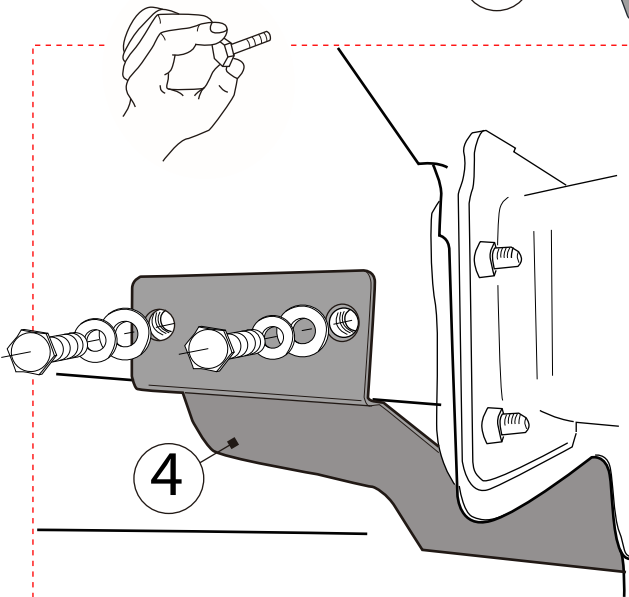
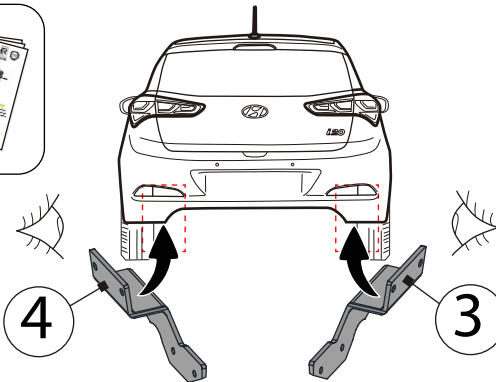
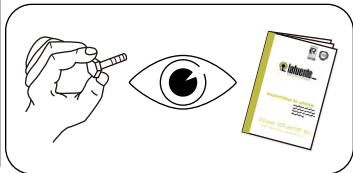
HYUNDAI i20 ACTIVE



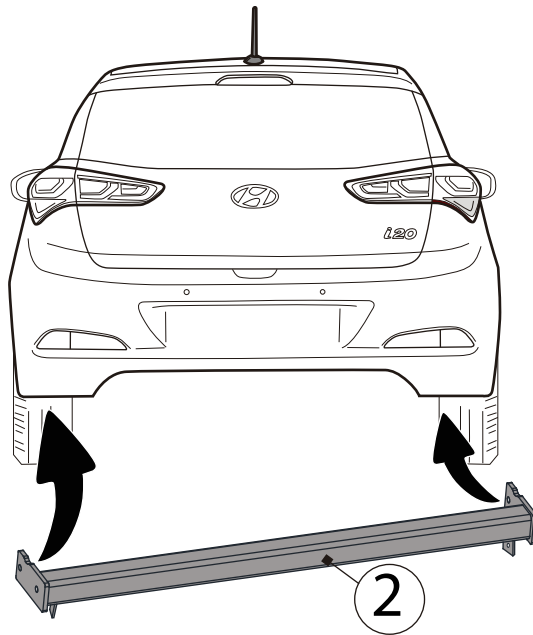
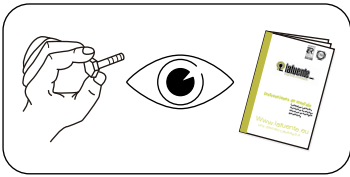
3



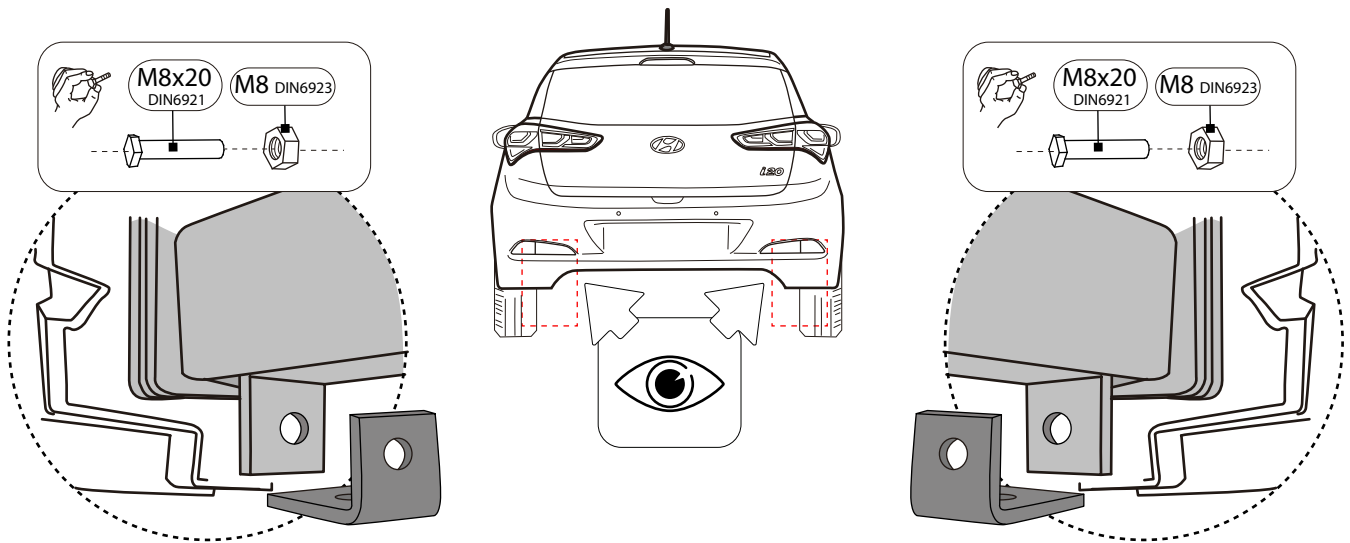
4



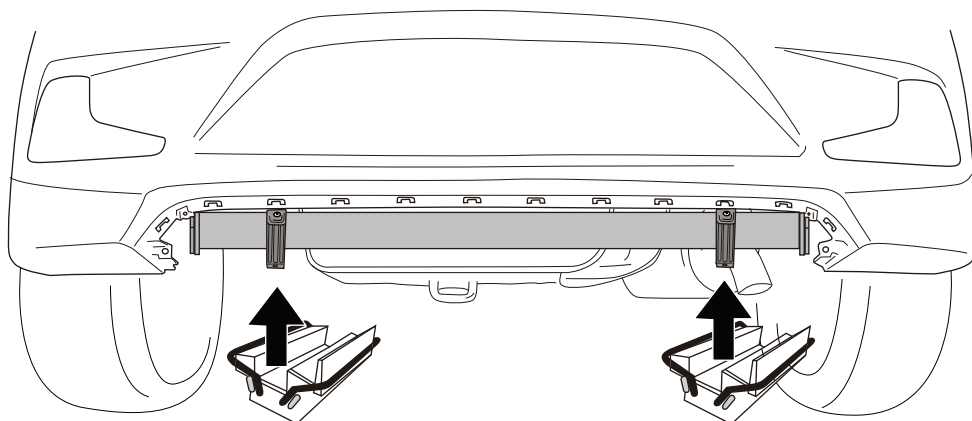
5



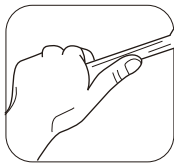
HYUNDAI i20(5PUERTAS) HYUNDAI i20 ACTIVE



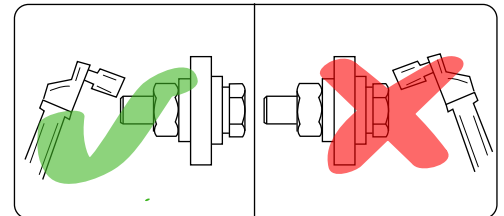
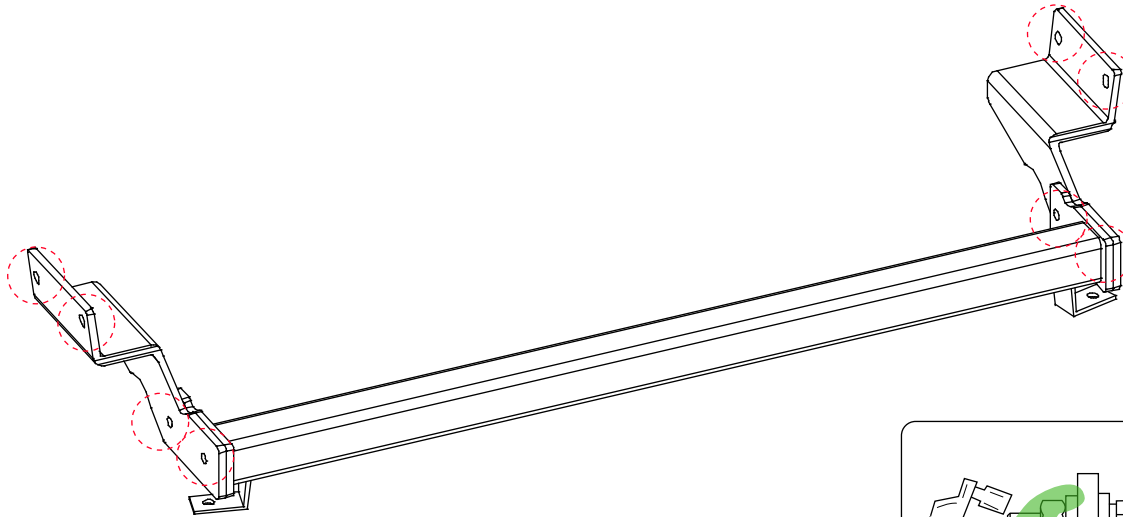
HYUNDAI i20 COUPE



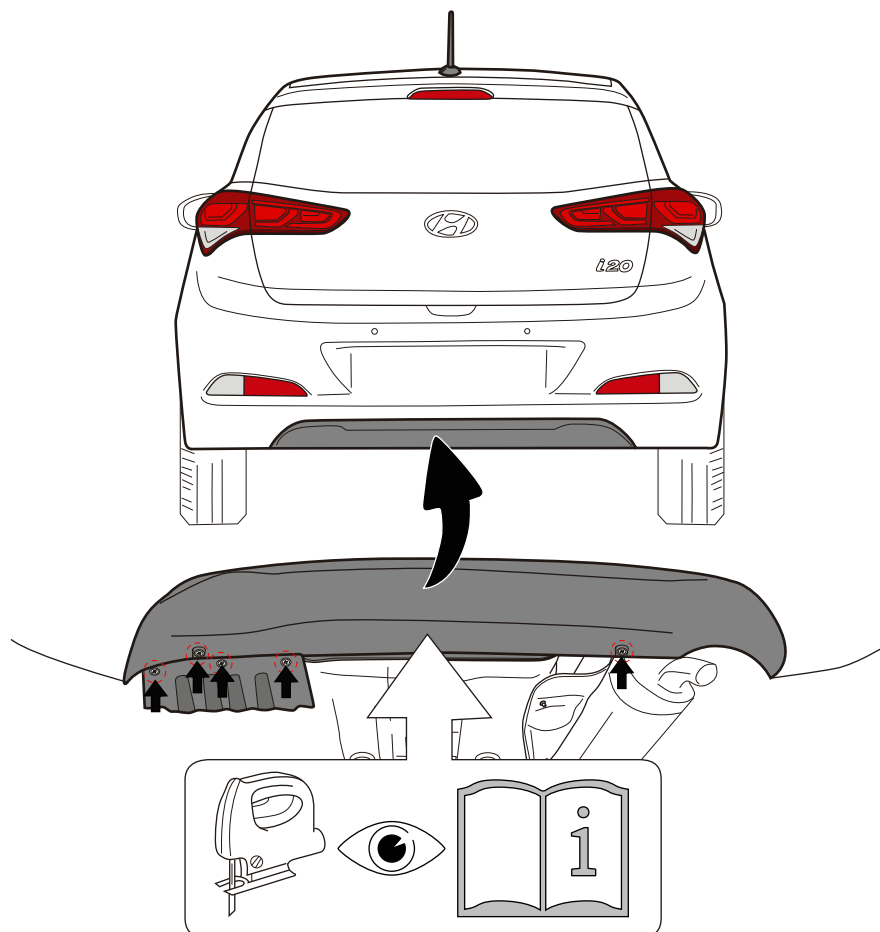
5

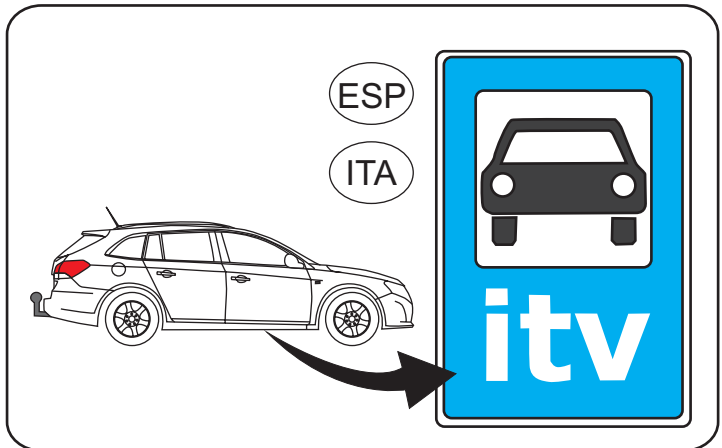
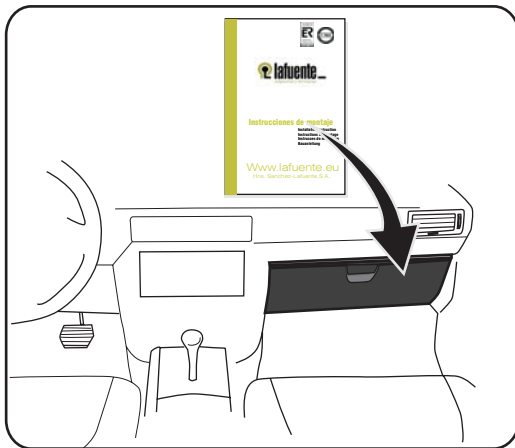
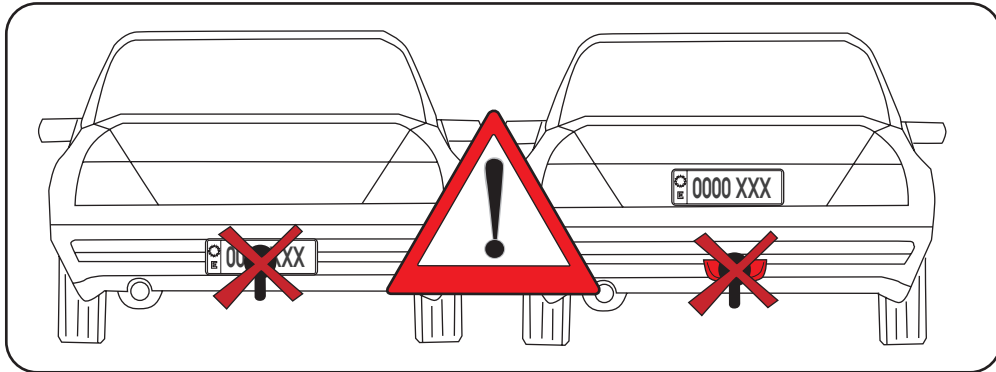
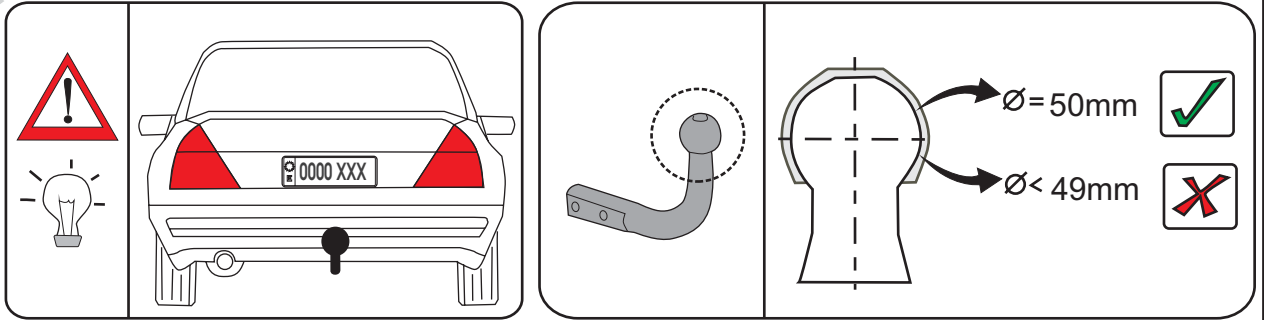
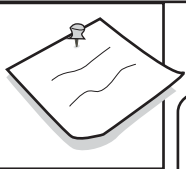


	M6	M8	M10	M12	M14	M16
8.8	10,4Nm	25,0Nm	51,0Nm	87,0Nm	140,0Nm	215,0Nm
10.9	15,5Nm	37,0Nm	75,0Nm	130,0Nm	205,0Nm	310,0Nm
12.9	18,0Nm	43,0Nm	87,0Nm	150,0Nm	240,0Nm	370,0Nm

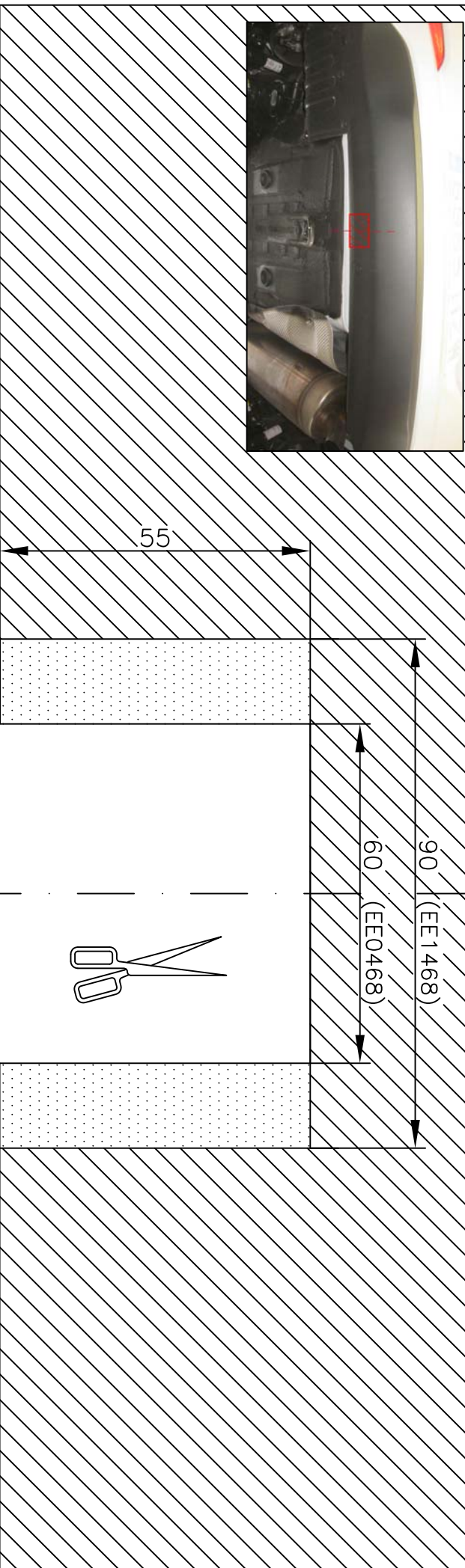


6



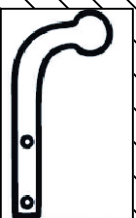


	M6	M8	M10	M12	M14	M16
8.8	10,4Nm	25,0Nm	51,0Nm	87,0Nm	140,0Nm	215,0Nm
10.9	15,5Nm	37,0Nm	75,0Nm	130,0Nm	205,0Nm	310,0Nm
12.9	18,0Nm	43,0Nm	87,0Nm	150,0Nm	240,0Nm	370,0Nm

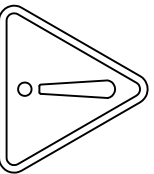


LINEA CENTRAL DE LA CARCASA

EE0468

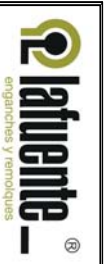


EE1468



ESP: El corte es orientativo

UK: The cut is indicative



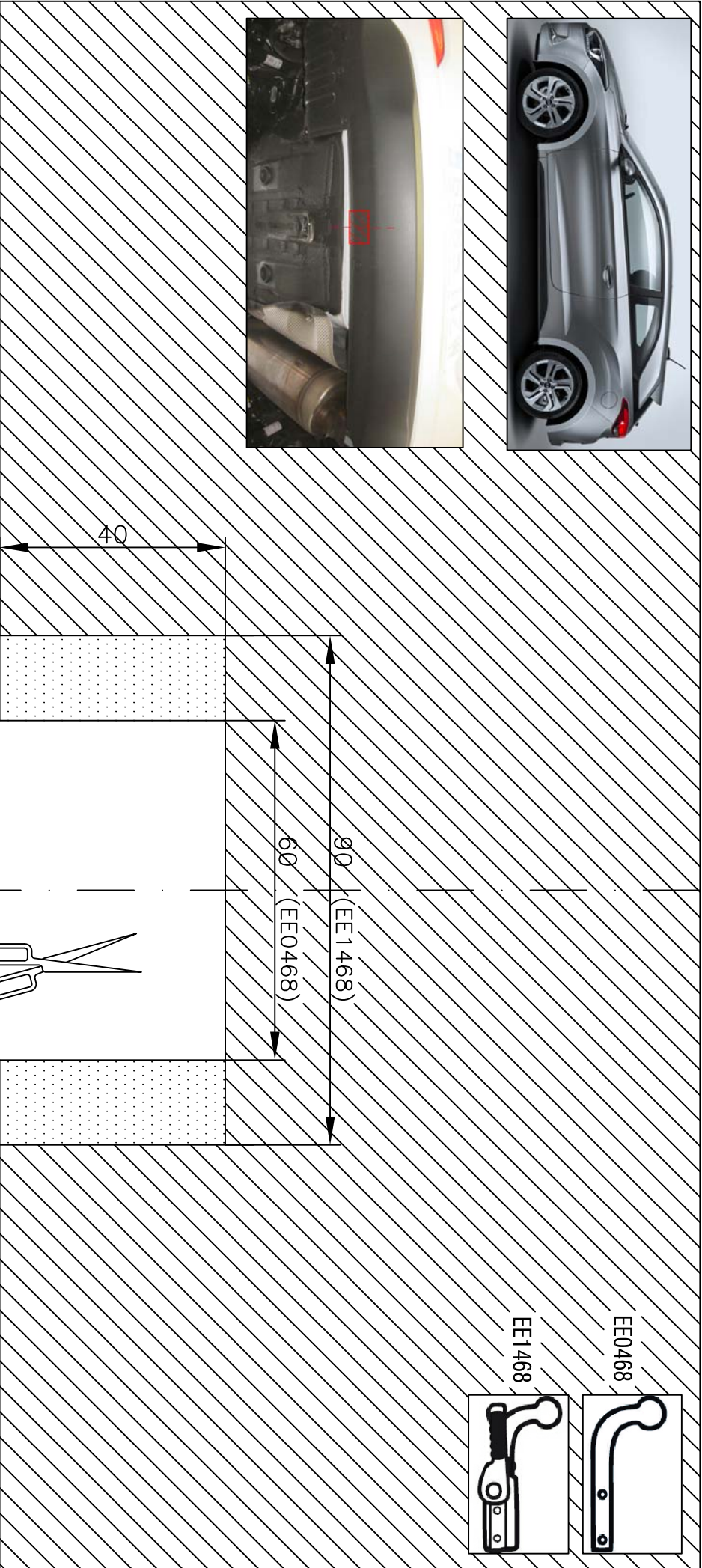
Dibujo:
CORTE CARCASA PARAGOLPES
HYUNDAI i20 (5puertas)

Escala:
1:1

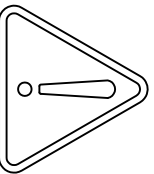
UNIDADES EN
mm

EE0468-EE1468

Rev.
P1



LINEA CENTRAL DE LA CARCASA



ESP: El corte es orientativo

UK: The cut is indicative



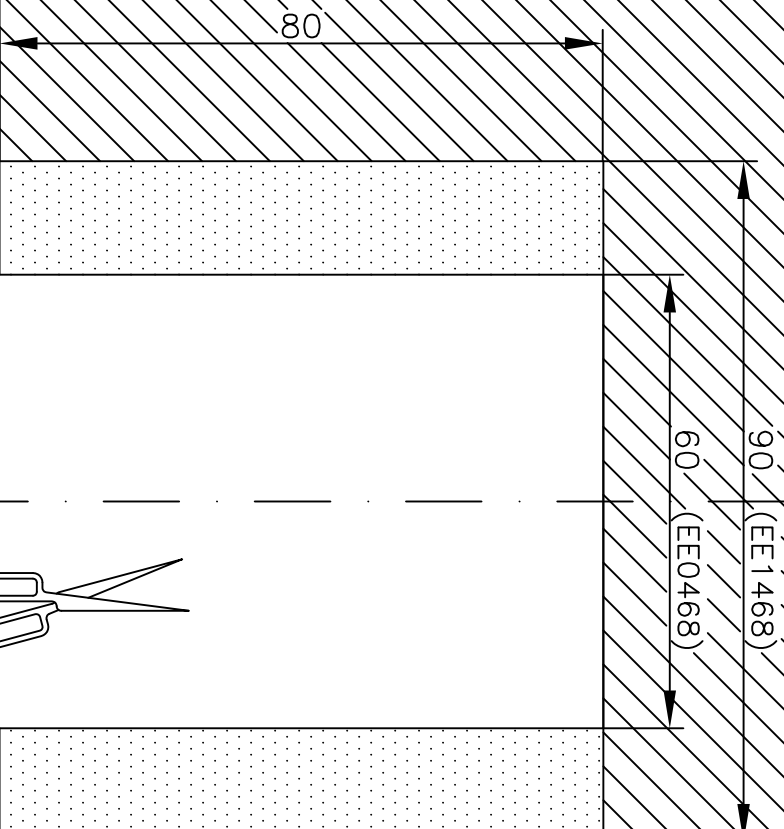
Dibujo:
CORTE CARCASA PARAGOLPES
HYUNDAI i20 COUPE (3puertas)

Escala:
1:1

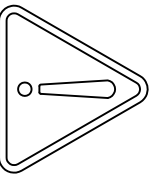
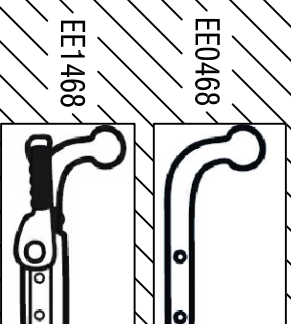
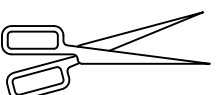
UNIDADES EN
mm

EE0468-EE1468

Rev.
P1



LINEA CENTRAL DE LA CARCASA



ESP: El corte es orientativo
UK: The cut is indicative



ingenieros y remolques

Dibujo: CORTE CARCASA INTERIOR

PARAGOLPES

HYUNDAI i20 ACTIVE

Escala: 1:1
UNIDADES EN mm

EE0468-EE1468

Rev. P1